

DINO® 265RXT

New model in self-propelled DINO RXT-series Reach higher in demanding work environments

- Lightweight, agile and easy to use on rough terrain
- Four-wheel drive and three different steering modes
- Excellent gradeability 35 %
- Set up on severely sloping terrain
- Reach over obstacles with articulated riser and telescopic boom

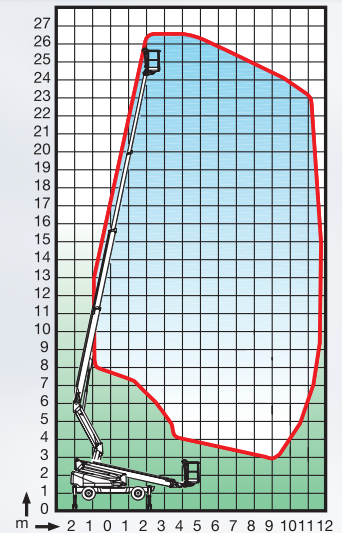


REACH SPECIFICATIONS

Max. working height	26.5 m
Max. platform height	24.5 m
Max. outreach	11.7 m
Lifting capacity	215 kg
Boom rotation	continuous
Basket rotation	90°
Support width	4.0 m
Support length	4.4 m

DIMENSIONS

Basket size	0.7 x 1.3 m
Transport length	7.17 m
Transport width	2.11 m
Transport height	2.41 m
Weight	4500 kg



CHASSIS

Gradeability	35%
Drive speed (high / low)	4.7 km/h / 1.5 km/h
Four wheel drive	standard
Steering	2WS / 4WS / crab steer
Tires	pneumatic, 12-16.5

POWER SOURCE

Diesel engine	19.7 kW (26.4 hp)
---------------	-------------------

OTHER STANDARD FEATURES

Boom control	proportional
Level control	electrical with LED-display

OPTIONS

Power source	electric motor (230V/50Hz) for boom motions
Outrigger control	automatic levelling system

Get Lifted™

DINO Lift®

www.dinolift.com