

LEO 25 T

Technical Data*

Aerial Work Platform **TEUPEN[®] hyLIFT[®]**



LEO 25 T

Working height:	approx. 25,00 m
Cage floor height:	approx. 23,00 m
Lateral outreach to either side at 200 kgs:	approx. 12,50 m
at 80 kgs:	approx. 15,50 m
Safe load on cage:	max. 200 kgs
Working cage rot. hydr. around:	approx. 180°
Basket change system with basket (LxWxH)	approx. 1,2 x 0,8 x 1,1 m
Overall length in travelling position:	approx. 7,22 m
Overall width in travelling position min.:	approx. 1,78 m
Overall height in travelling position min.:	approx. 1,98 m
Trailing load:	approx. 2980 kgs
Jacked width (centre of jack plate):	approx. 4,34 m
Jacked with one side narrow (centre of jack plate):	min. 3,48 m
Jacked width both sides narrow (centre of jack plate):	min. 2,61 m
Range of rotation:	approx. 450°
Restricted range of rotation one side narrow / both sides narrow:	40° / 220°
Size of stabilizing jack plate:	approx. 0,31 m x 0,22 m
Max. load on jack plate per plate:	approx. 21,8 kN
Live load in standard work position:	approx. 1,54 kN/m ²
Live load in travelling position:	approx. 2,27 kN/m ²
To be jacked up to ground slope of:	approx. 23 %
Angle of slope:	approx. 28 %
Climbing ability:	approx. 30 %
Height-adjustable crawlers:	approx. 0,2 m
Crawler width:	approx. 0,2 m
Driving speed:	approx. 1,5 km/h
Nominal input voltage:	230 V / 50 c. p. s.
Power consumption:	1,5 kW / 9,9 A

Driving engine Kubota - Diesel D 722 - E

Manufacturer:	Kubota
Type:	D 722 - E
No. of cylinders:	3 in line
Cubic capacity:	719 ccm
Cooling system:	Water cooled
Max. output:	14 kW
Fuel tank capacity:	12 Liter

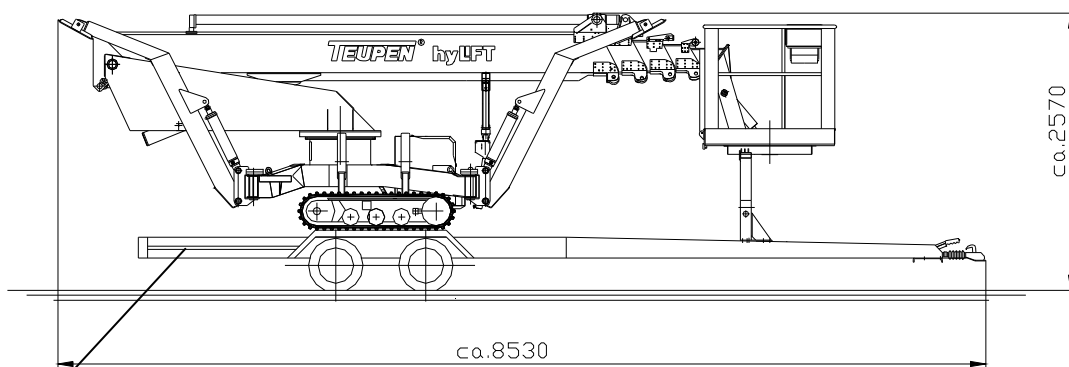
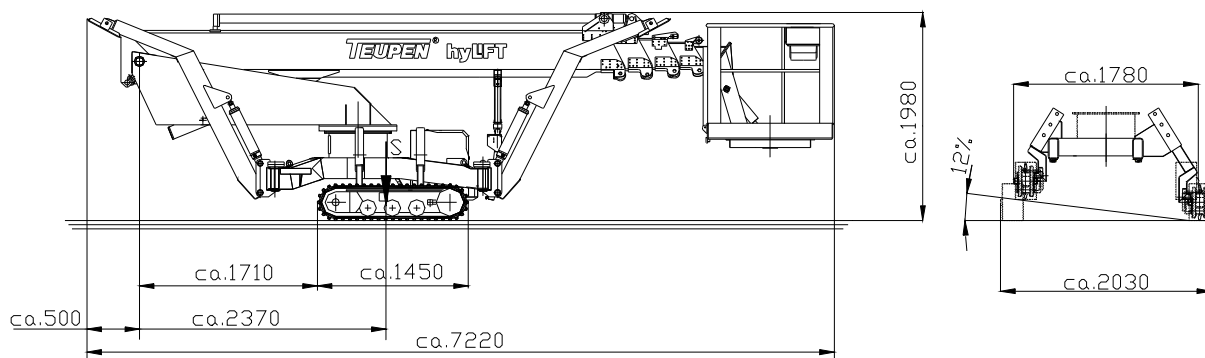
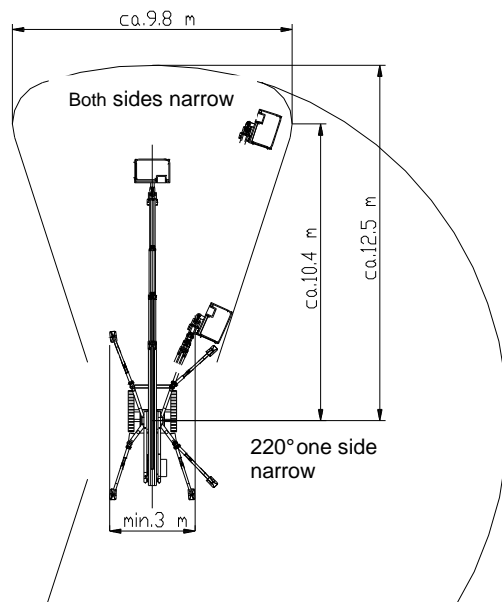
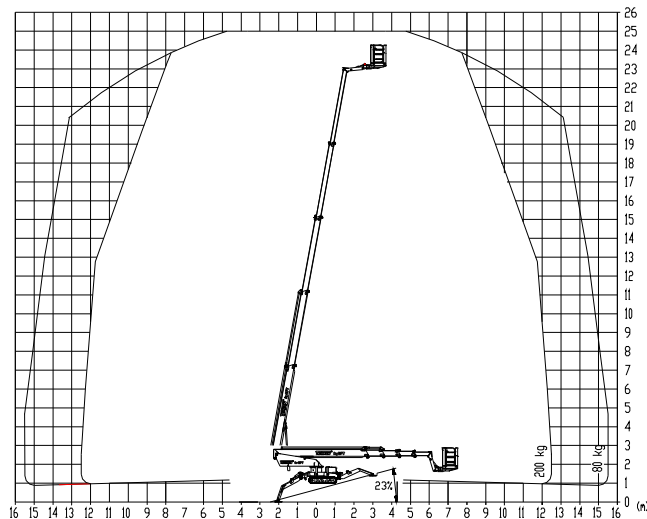
Ancillary equipment

Trailer for the road transport of the unit:	
Permissible total weight:	approx. 3500 kgs

*Technical data with standard equipment!

Alterations in construction reserved!

As at 28.08.06



Trailer (possible option)

Alteration in construction reserved!

TEUPEN Maschinenbaugesellschaft mbH

Address: Marie-Curie-Strasse 13 - 48599 Gronau-GERMANY - Phone ++49 / 2562 / 8161-0 - Fax ++49 / 2562 / 8161-888
 P. O. Box: 1951 - 48580 Gronau-GERMANY

Internet: <http://www.teupen.info> - E-mail: mail@teupen.info